



MASTERCcolour CDM-TD

MASTERCcolour CDM-TD 150W/830 RX7s 1CT

Range of double-ended, compact, high-efficiency, discharge lamps with a stable color over lifetime and a crisp, sparkling light

Product data

General Information		Operating and Electrical	
Cap-Base	RX7S [RX7s]	Chromaticity Coordinate Y (Nom)	0.399
Bulb Shape	T25 [T 25mm]	Correlated Color Temperature (Nom)	3000 K
Operating Position	P45 [Parallel +/-45D or Horizontal(HOR)]	Luminous Efficacy (rated) (Nom)	91 lm/W
Life To 5% Failures (Nom)	9000 h	Color Rendering Index (Nom)	88
Life To 10% Failures (Nom)	13000 h	Operating and Electrical	
Life To 20% Failures (Nom)	15000 h	Power (Rated) (Nom)	145.0 W
Life To 50% Failures (Nom)	16000 h	Lamp Current Run-Up (Max)	2.5 A
ANSI Code HID	C142/E	Lamp Current (EM) (Nom)	1.8 A
Light Technical		Ignition Supply Voltage (Max)	198 V
Color Code	830 [CCT of 3000K]	Ignition Peak Voltage (Max)	5000 V
Luminous Flux (Nom)	13250 lm	Ignition Supply Voltage (Min)	198 V
Luminous Flux (Rated) (Nom)	13250 lm	Re-Ignition Time (Min) (Max)	15 min
Color Designation	Warm White (WW)	Ignition Time (Max)	30 s
Lumen Maintenance 10000 h (Nom)	75 %	Voltage (Max)	106 V
Lumen Maintenance 2000 h (Min)	80 %	Voltage (Min)	90 V
Lumen Maintenance 2000 h (Nom)	90 %	Voltage (Nom)	98 V
Lumen Maintenance 5000 h (Min)	75 %	Controls and Dimming	
Lumen Maintenance 5000 h (Nom)	85 %	Dimmable	No
Chromaticity Coordinate X (Nom)	0.437		

MASTERCLOUR CDM-TD

Run-Up Time 90% (Max)	3 min
-----------------------	-------

Mechanical and Housing

Bulb Finish	Clear
-------------	-------

Approval and Application

Energy Efficiency Label (EEL)	A+
Mercury (Hg) Content (Nom)	10.23 mg
Energy Consumption kWh/1000 h	160 kWh

UV

Pet (Niosh) (Min)	8 h/500lx
Damage Factor D/fc (Max)	0.3

Luminaire Design Requirements

Bulb Temperature (Max)	650 °C
------------------------	--------

Pinch Temperature (Max)	300 °C
-------------------------	--------

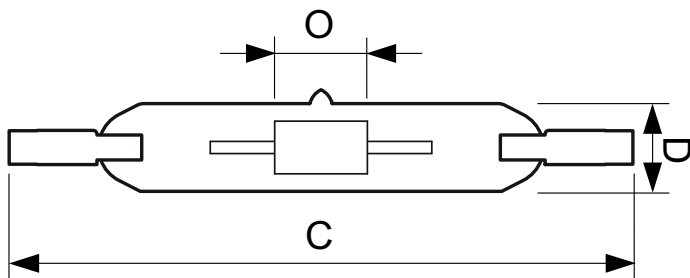
Product Data

Full product code	871150019784915
Order product name	MASTERCLOUR CDM-TD 150W/830 RX7s 1CT
EAN/UPC - Product	8711500197849
Order code	928083605133
Numerator - Quantity Per Pack	1
Numerator - Packs per outer box	12
Material Nr. (12NC)	928083605133
Net Weight (Piece)	26.700 g
ILCOS Code	MD/UB-150/830-H-RX7s-25/135.4

Warnings and Safety

- Use only in totally enclosed luminaire, even during testing (IEC61167, IEC 62035, IEC60598)
- The luminaire must be able to contain hot lamp parts if the lamp ruptures
- Lamps may use electronic or electromagnetic control gear
- Control gear must include end-of-life protection (IEC61167, IEC 62035)
- A lamp breaking is extremely unlikely to have any impact on your health. If a lamp breaks, ventilate the room for 30 minutes and remove the parts, preferably with gloves. Put them in a sealed plastic bag and take it to your local waste facilities for recycling. Do not use a vacuum cleaner.

Dimensional drawing



Product	D	D	O	C
MASTERCLOUR CDM-TD 150W/830 RX7s 1CT	25 mm	0.875 in	10 mm	137.43 mm

CDM-TD 150W/830 RX7s

MASTERC colour CDM-TD

Photometric data

