

UTP	Cat 5e	0 337 53
	Cat 6	0 337 63
	Cat 6A	0 337 73
FTP	Cat 5e	0 337 54
	Cat 6	0 337 64
STP	Cat 6	0 337 65
	Cat 6A	0 337 75

- Installation
  - Installatie
  - Installation
- Installation
  - Instalação
  - Installazione

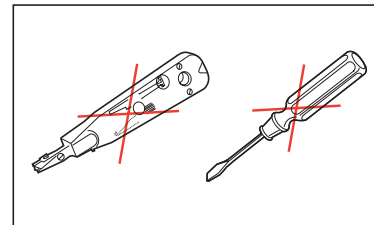
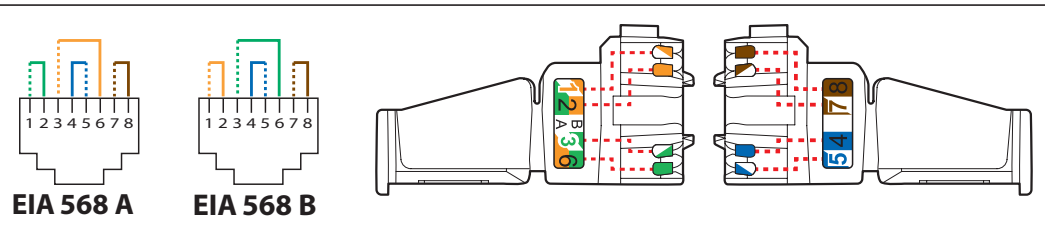
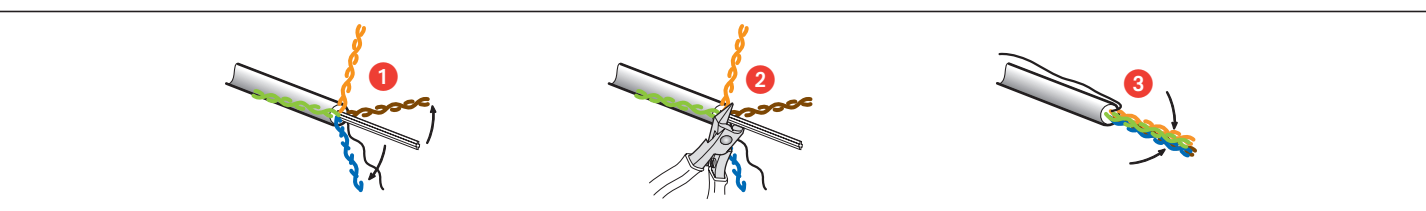
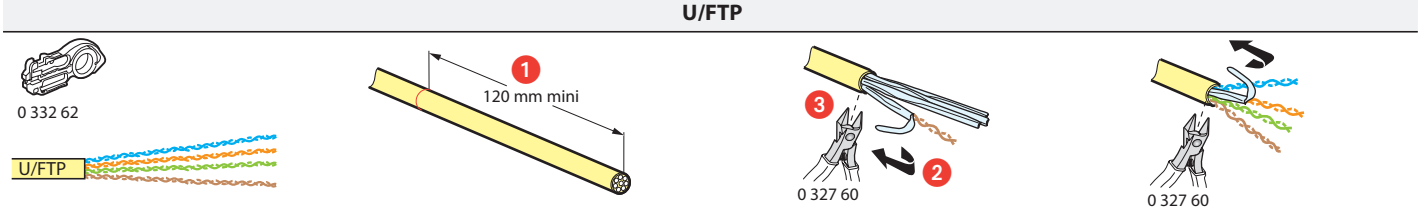
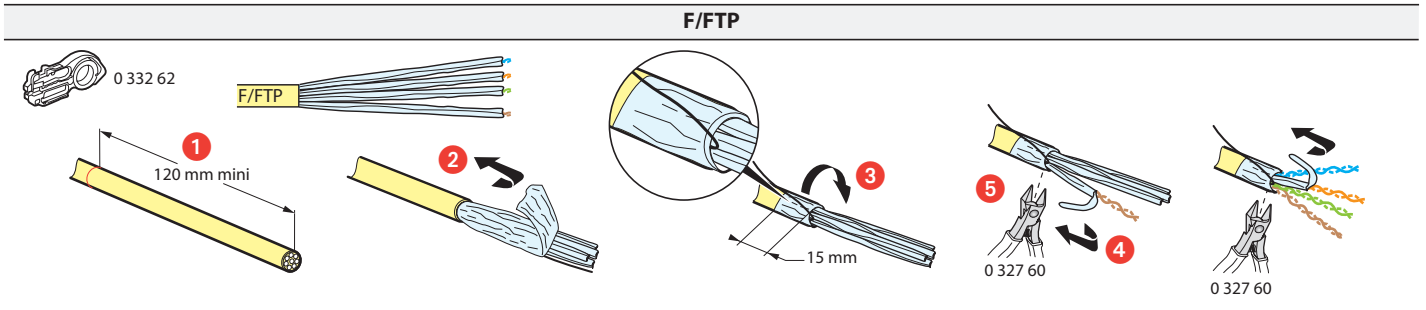
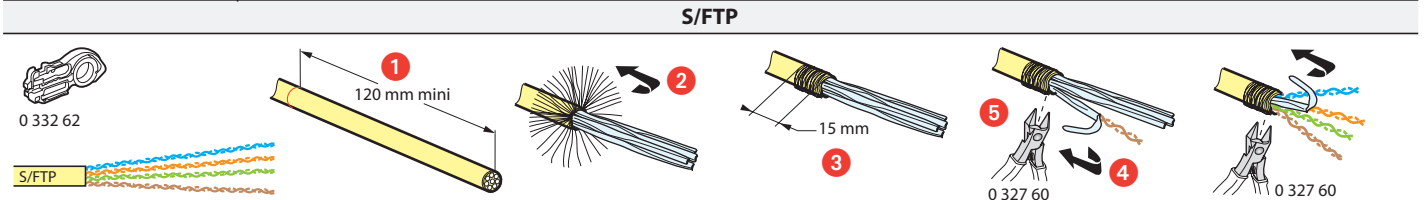
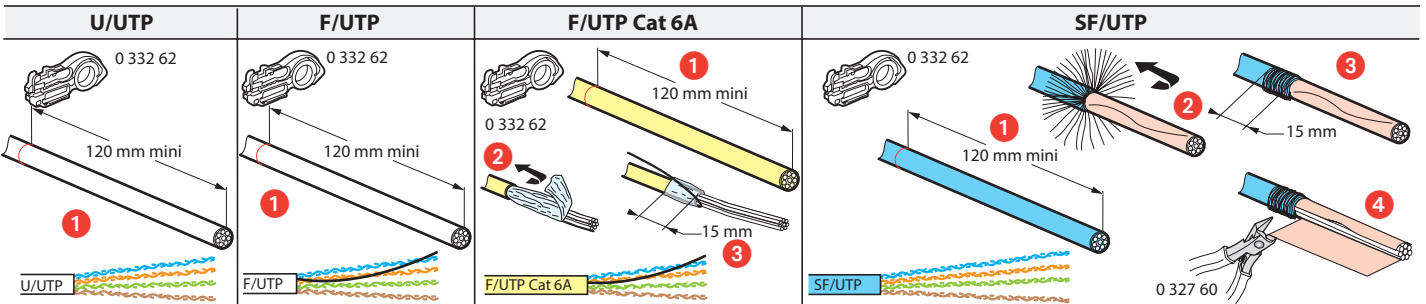
- Εγκατάσταση
- Установка
- Installazione

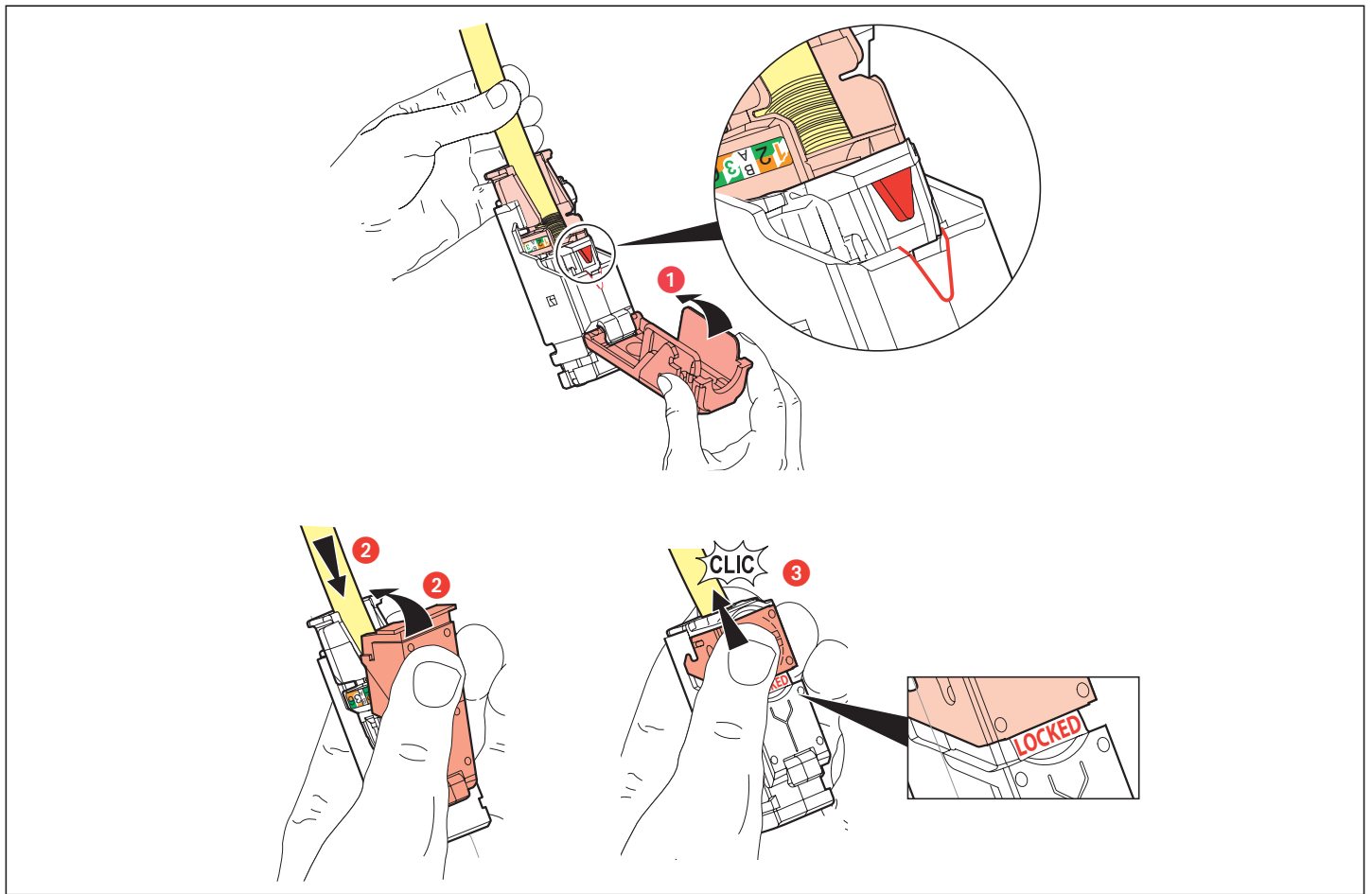
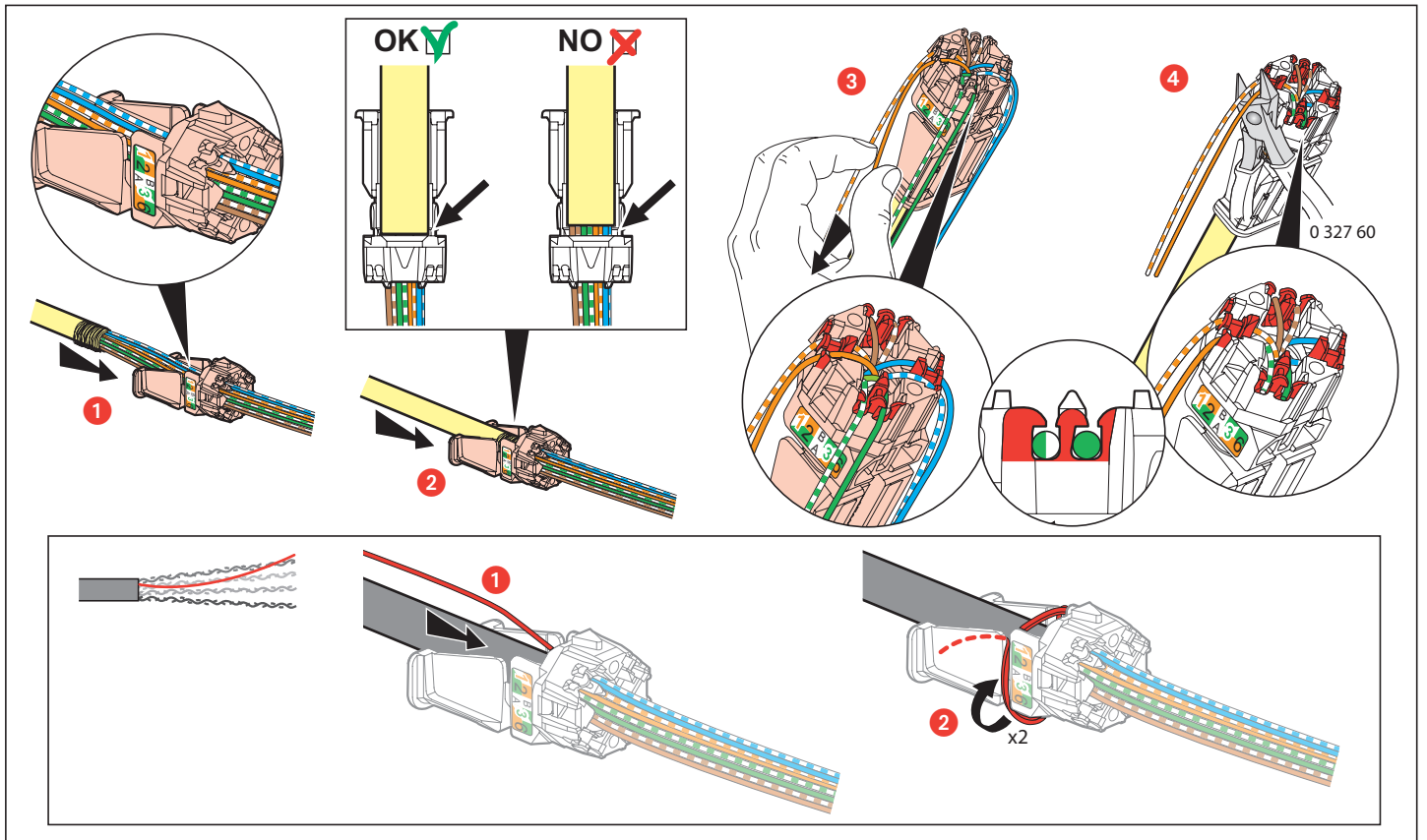
- 安装
- التركيب



Cat 5e L1 ≤ 90 m  
Cat 6 L2 + L3 ≤ 10 m  
Cat 6A

- Câblage (AWG 22....26)
  - Bekabeling (AWG 22....26)
  - Cabling (AWG 22 to 26)
- Verdrahtung (AWG 22 bis 26)
  - Cableado (AWG 22....26)
  - Cablagem (AWG 22-26)
- Καλωδίωση (AWG 22....26)
  - Прокладка проводов (AWG 22....26)
  - Cablaggio (AWG 22....26)
- 布线 (AWG 22....26)
  - ربط الأسلاك (AWG 22....26)





**⚠ Consignes de sécurité** (FR LU BE CH)  
 Avant toute intervention, couper le courant.  
 Respecter strictement les conditions d'installation et d'utilisation.

**⚠ Veiligheidsvoorschriften** (NL BE)  
 Onderbreek voor enige ingreep de stroom.  
 Neem de installatie- en gebruiksvoorwaarden nauwgezet in acht.

**⚠ Safety instructions** (GB IE)  
 Make sure the power supply is disconnected before any intervention.  
 Strictly comply with instructions for installation and use.

**⚠ Sicherheitshinweise** (DE CH)  
 Vor jeglichem Eingriff die Spannungsfreiheit sicherstellen.  
 Einbau- und Gebrauchsanleitungen sind genau zu beachten.

**⚠ Consignas de seguridad** (ES)  
 Antes de realizar cualquier intervención, cortar la corriente eléctrica.  
 Respetar estrictamente las condiciones de instalación y uso.

**⚠ Instruções de segurança** (PT)  
 Antes de qualquer intervenção, desligar a corrente.  
 Respeitar rigorosamente as condições de instalação e de utilização.

**⚠ Συστάσεις ασφαλείας** (GR CY)  
 Πριν από οποιαδήποτε επέμβαση, διακόψτε την παροχή ρεύματος.  
 Να τηρείτε ανστηρά τις συνθήκες εγκατάστασης και χρήσης.

**⚠ Меры предосторожности** (RU)  
 Отключить питание перед проведением любых ремонтных работ.  
 Строго соблюдайте требования к условиям монтажа и эксплуатации.

**⚠ Istruzioni di sicurezza** (IT CH)  
 Prima di qualsiasi intervento, interrompere l'alimentazione.  
 Rispettare scrupolosamente le condizioni d'installazione e uso.

**⚠ 安全提示**  
 在任何干涉以前一定要断电，严格遵守安全和使用的规定。  
 «إرشادات الأمان: اقطع التيار الكهربائي قبل أي تدخل. تقيّد تقييداً تاماً بشروط التركيب والاستخدام.»