

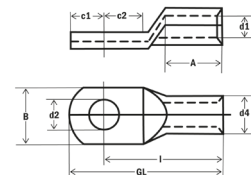
Трубчатый кабельный наконечник с насечкой для тонкопроволочных высокогибких кабелей **F-type**

- из трубки
- материал: 99,9% электролитная медь E-CU DIN 40500
- поверхность: лужёная
- с глазком • класс кабеля 5/6



Cu

№ арт.	псп	M	d2	d1	d4	A	Д	c1	c2	Kr/100	☒	УЕ
290250 *	10	6	6,4	5,0	8,0	16,0	23,0	6,0	7,0	0,700	1000	100
290252		8	8,4	5,0	8,0	17,0	26,0	7,0	9,0	0,700	800	100
290254		10	10,5	5,0	8,0	16,0	26,0	8,0	10,0	0,800	600	100
290256		12	13,0	5,0	8,0	17,0	31,0	10,0	14,0	0,800	600	100
290258	16	6	6,4	6,0	9,0	17,0	26,0	7,0	9,0	0,900	600	100
290260 *		8	8,4	6,0	9,0	17,0	26,0	7,0	9,0	0,900	400	100
290262		10	10,5	6,0	9,0	16,0	28,0	10,0	12,0	1,000	400	100
290264		12	13,0	6,0	9,0	22,0	35,0	12,0	13,0	1,000	400	100
290266	25	6	6,4	8,0	11,0	20,0	30,0	7,0	10,0	1,300	400	50
290268 *		8	8,4	8,0	11,0	20,0	30,0	8,0	10,0	1,300	400	50
290270		10	10,5	8,0	11,0	20,0	32,0	10,0	12,0	1,500	300	50
290272		12	13,0	8,0	11,0	22,0	35,0	12,0	13,0	1,500	300	50
290276 *	35	8	8,4	9,0	13,0	25,0	35,0	10,0	10,0	2,500	240	40
290278		10	10,5	9,0	13,0	24,0	35,0	10,0	11,0	2,500	16,0	40
290280		12	13,0	9,0	13,0	26,0	40,0	12,0	14,0	2,600	16,0	40
290282	50	8	8,4	11,0	14,5	27,0	39,0	11,0	12,0	3,000	15	25
290284 *		10	10,5	11,0	14,5	27,0	39,0	11,0	12,0	2,900	150	25
290286 *		12	13,0	11,0	14,5	27,0	41,0	12,0	14,0	2,900	100	25
290288		16	17,0	11,0	14,5	27,0	44,0	15,0	17,0	3,000	100	25
290290	70	8	8,4	13,0	17,0	32,0	44,0	11,0	12,0	4,400	100	25
290292 *		10	10,5	13,0	17,0	32,0	44,0	11,0	12,0	4,000	100	25
290294		12	13,0	13,0	17,0	32,0	46,0	12,0	14,0	4,400	100	25
290296		16	17,0	13,0	17,0	32,0	49,0	15,0	17,0	4,500	100	25
290300	95	10	10,5	15,0	20,0	37,0	54,0	15,0	17,0	7,700	100	25
290302 *		12	13,0	15,0	20,0	37,0	54,0	15,0	17,0	7,400	100	25
290304		16	17,0	15,0	20,0	37,0	54,0	15,0	17,0	7,000	40	25
290306	120	10	10,5	17,0	22,0	41,0	58,0	15,0	17,0	9,400	80	20
290308 *		12	13,0	17,0	22,0	41,0	58,0	15,0	17,0	8,900	80	20
290310		16	17,0	17,0	22,0	41,0	58,0	15,0	17,0	8,700	72	18
290316 *	150	12	13,0	19,0	25,0	48,0	65,0	15,0	17,0	13,300	70	12
290318		16	17,0	19,0	25,0	48,0	65,0	15,0	17,0	12,700	48	12
290320		20	21,0	19,0	25,0	48,0	68,0	19,0	20,0	8,200	48	10
290322	185	12	13,0	21,0	27,0	54,0	71,0	15,0	17,0	16,200	40	20
290324		16	17,0	21,0	27,0	54,0	71,0	15,0	17,0	15,800	40	20
290326		20	21,0	21,0	27,0	54,0	74,0	19,0	20,0	14,200	40	15
290328 *	240	12	13,0	24,0	30,0	56,0	76,0	19,0	20,0	20,300	30	15
290330		16	17,0	24,0	30,0	56,0	76,0	19,0	20,0	20,700	30	15
290332		20	21,0	24,0	30,0	56,0	76,0	19,0	20,0	18,300	30	15
290334	300	12	13,0	26,0	32,0	62,0	93,0	21,0	31,0	30,000	16	8
290336		16	17,0	26,0	32,0	62,0	93,0	21,0	31,0	28,100	16	8
290338		20	21,0	26,0	32,0	62,0	93,0	21,0	31,0	26,200	16	8



Соединитель для тонкопроволочных высокогибких кабелей **F-type**

- из трубки
- материал: 99,9% электролитная медь E-CU DIN 40500
- поверхность: лужёная
- класс кабеля 5/6



Cu

№ арт.	псп	d1	d4	Од	Kr/100	☒	УЕ
290350	10	5,0	8,0	30	0,800	600	50
290352	16	6,0	9,0	35	1,000	500	50
290354	25	8,0	11,0	35	1,300	200	50
290356	35	9,0	13,0	35	2,100	200	25
290358	50	11,0	14,5	45	3,700	100	25
290360	70	13,0	17,0	45	4,600	50	25
290362	95	15,0	20,0	45	7,300	50	50
290364	120	17,0	22,0	55	6,900	50	25
290366	150	19,0	25,0	65	9,800	50	18
290368	185	21,0	27,0	70	13,600	36	18
290370	240	24,0	30,0	70	16,000	12	6
290372	300	26,0	32,0	75	7,000	6	6
290374	400	30,0	36,0	100	11,100	6	6

