

L COLOR PROOF 18 W/950

COLOR proof T8 | Tubular fluorescent lamps 26 mm, with G13 bases, color-proof



- Printing industry, graphic workshops, photographic laboratories
- Industrial inspection and color matching facilities
- Industry
- Shops
- Supermarkets and department stores

Product benefits

- Outstanding OSRAM quality
- Accurate chromaticity coordinates
- Stable light-technical and electrical data
- Uniform coating

Product features

- Meets the application requirements of ISO 3664:2009 (when used in appropriate fixtures)
- Metamerism indices: M_{VIS} ≤1.0 and M_{UV} ≤1.5



Technical data

Electrical data

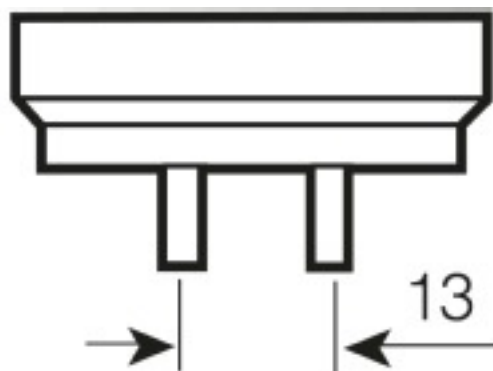
Nominal wattage	18 W
Rated lamp efficacy (HF data)	Under clarification by authority and standardization body
Rated wattage	18 W

Light technical data

Luminous flux at 25 °C	900 lm
Light color	950
Light color as per EN 12464-1	Daylight

Dimensions & weight

Tube diameter	26 mm
Length	590.0 mm
Length with base excl. base pins/connection	590.00 mm
Diameter	26.0 mm



G13
IEC 7004-51
DIN 49653 T1

Product line drawing with letters

Base

Colors & materials

Lamp mercury content	8.0 mg
----------------------	--------

Lifespan

Lifespan	20000 h
----------	---------

Additional product data

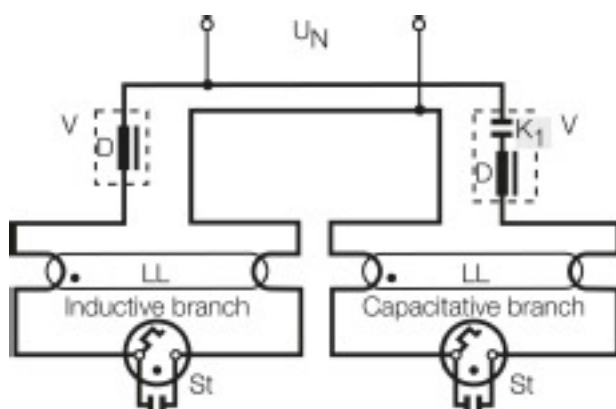
Base (standard designation)	G13
Appropriate disposal acc. to WEEE	Yes

Certificates & standards

EEI - Energy Label	B
--------------------	---

Safety advice

In case of lamp breakage: www.osram.com/brokenlamp



Circuit diagram

Logistical Data

Product code	Packaging unit (Pieces/Unit)	Dimensions (height x width x length)	Gross weight	Volume
4008321423023	Sleeves 1	32 mm x 27 mm x 605 mm	97.00 g	0.52 dm ³
4008321423030	Shipping carton box 10	145 mm x 62 mm x 632 mm	1135.00 g	5.68 dm ³

References / Links

For more information on QUICKTRONIC electronic control gear go to

▶ www.osram.com/QUICKTRONIC

Disclaimer

Subject to change without notice. Errors and omission excepted. Always make sure to use the most recent release.